

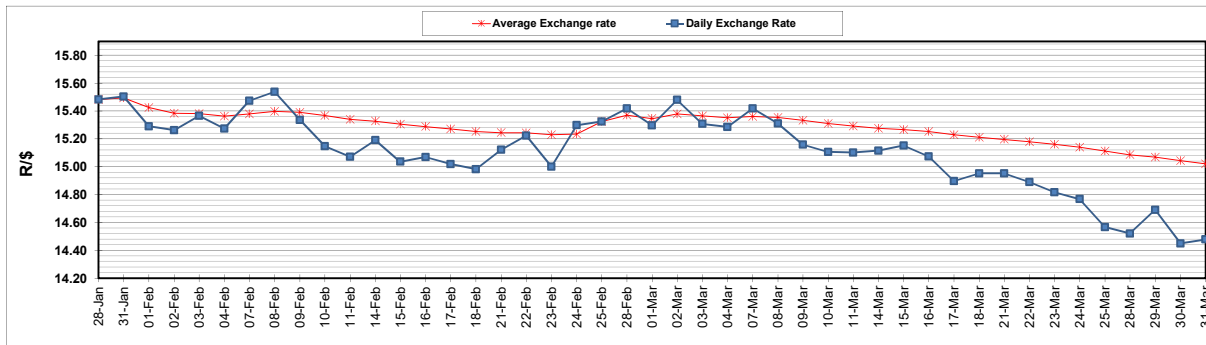
	PETROL 95 ULP	PETROL 93 ULP & LRP	DIESEL 0.05%	DIESEL 0.005%	ILL. PAR.
GAUTENG PUMP PRICE (SA c/l) AS FROM 02/03/2022	2,160.000	2,135.000	-	-	-
WHOLESALE PRICE (SA c/l) AS FROM 02/03/2022	-	-	1,948.880	1,955.280	1,318.688
SINGLE NATIONAL MAXIMUM RETAIL PRICE	-	-	-	-	1,690.000
BASIC FUEL PRICE - 31/03/2022 (SA c/l)	1,193.424	1,167.654	1,342.672	1,365.040	1,333.624
PRESS RELEASE CONTRIBUTION TO BFP 02/03/2022 - 31/03/2022 (SA c/l)	1,100.270	1,085.270	1,107.630	1,114.030	1,097.128
UNIT OVER/(UNDER) RECOVERY - 31/03/2022 (SA c/l)	(93.154)	(82.384)	(235.042)	(251.010)	(236.496)
AVERAGE BASIC FUEL PRICE 25/02/2022 - 31/03/2022	1,262.230	1,239.279	1,386.702	1,408.138	1,348.435
AVERAGE UNIT OVER/(UNDER) RECOVERY 25/02/2022 - 31/03/2022	(177.637)	(169.686)	(294.552)	(310.068)	(265.827)

### ANALYSIS MOVEMENT OF AVERAGE OVER/(UNDER) RECOVERY

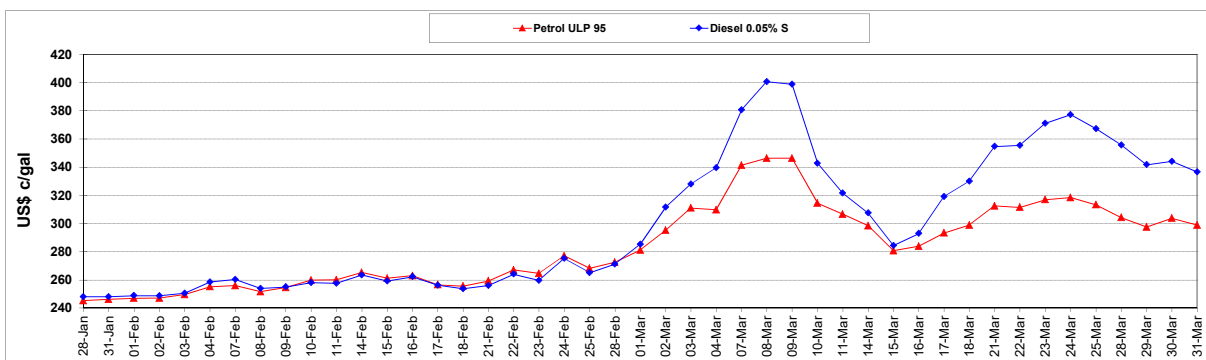
	PETROL 95	PETROL 93	DIESEL 0.05%	DIESEL 0.005%	ILL. PAR.
- MOVEMENT IN INTERNATIONAL PRODUCT PRICES	(195.552)	(187.276)	(314.234)	(330.054)	(284.966)
- MOVEMENT IN EXCHANGE RATE	17.915	17.590	19.682	19.986	19.139
AVERAGE UNIT OVER/(UNDER) RECOVERY 25/02/2022 - 31/03/2022	(177.637)	(169.686)	(294.552)	(310.068)	(265.827)

### R/\$ EXCHANGE RATE - (R/\$14.4780 - 31/03/2022)

#### EXCHANGE RATE USED IN BASIC FUEL PRICE



#### INTERNATIONAL PRODUCT PRICES OF BASKET USED IN BASIC FUEL PRICE



#### BASIC FUEL PRICE IN SA CENTS PER LITRE

